



Performance when you need it

EMR SERIES



Performance when you need it

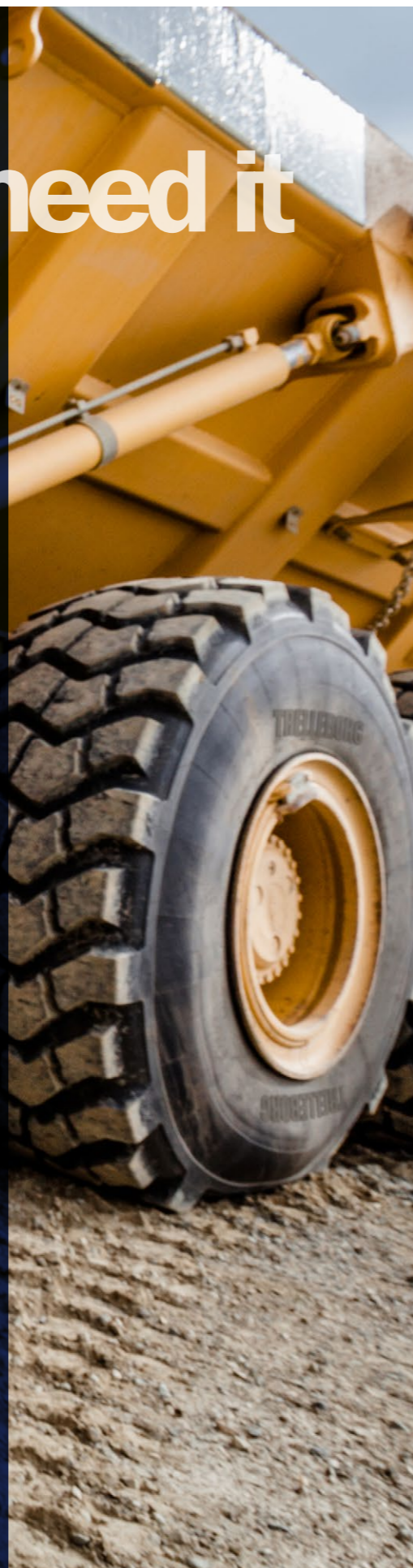
The EMR, Earthmover Radial Series, from Trelleborg: tires designed to perform.

The Trelleborg EMR range is designed to enhance productivity in critical construction applications, delivering both enhanced damage protection and durability while multi surface tread designs deliver control and perfect grip when it's needed the most whether on sand, rock, gravel or soil.

The strong radial carcass and state of the art compound assure long life, while providing equal load distribution for a comfort drive keeping low fuel consumption.

Designed for Loaders and Dumpers applications, the EMR tires are suitable for open pits and quarry, underground mines as well as general construction applications.

- Radial all-steel construction
- Reinforced carcass
- Multi Surface tread pattern
- Excellent ride comfort



EMR Series Earthmover Radial Tires



RADIAL
CONSTRUCTION



REINFORCED
CARCASS



MULTI
SURFACE



EXCELLENT RIDE
COMFORT



EMR 1042

EMR 1045

TRELLEBORG CONSTRUCTION RANGE
EMR SERIES

LOADER/TRANSPORT SERVICE

Tire size	Tread pattern type	Rim (permitted)	New		Max. in service		Loaded static radius (mm)	Rolling circumference (mm)	Tread depth (mm)	Service description LI/SS	Tire load capacity (kg) at 10 (km/h)	Tire pressure (bar)	Tire load capacity (kg) at 50 (km/h)	Tire pressure (bar)
			Overall diameter (mm)	Section width (mm)	Overall diameter (mm)	Overall width (mm)								
17.5 R 25	EMR 1020 TL	14.00/1.5-25 (14.00/1.5x25 DC, 14.00/1.3x25 DC)	1,348	445	1,405	494	588	4,231	28	* 176 A2/157 B	7,100	4.5	4,125	3.5
	EMR 1030 TL	14.00/1.5-25 (14.00/1.5x25 DC, 14.00/1.3x25 DC)	1,348	445	1,405	494	588	4,226	28	* 176 A2/157 B	7,100	4.5	4,125	3.5
20.5 R 25	EMR 1020 TL	17.00/2.0-25 (17.00/1.7-25)	1,493	521	1,561	578	670	4,686	31	** 193 A2/177 B	11,500	5.75	7,300	4.5
	EMR 1030 TL	17.00/2.0-25 (17.00/1.7-25)	1,493	521	1,561	578	670	4,683	36	** 193 A2/177 B	11,500	5.75	7,300	4.5
	EMR 1030V TL	17.00/2.0-25 (17.00/1.7-25)	1,493	521	1,561	578	643	4,515	36	** 193 A2	11,500	5.75		
	EMR 1050 TL	17.00/2.0-25 (17.00/1.7-25)	1,538	520	1,621	577	686	4,845	85	** 193 A2	11,500	5.75		
23.5 R 25	EMR 1020 TL	19.50/2.5-25	1,617	597	1,695	663	727	5,065	34	** 201 A2/185 B	14,500	5.75	9,250	4.5
	EMR 1030 TL	19.50/2.5-25	1,617	597	1,695	663	727	5,072	38	** 201 A2/185 B	14,500	5.75	9,250	4.5
	EMR 1040 TL	19.50/2.5-25	1,673	597	1,756	663	768	5,244	60	** 201 A2/185 B	14,500	5.75	9,250	4.5
	EMR 1050 TL	19.50/2.5-25	1,673	597	1,756	663	737	5,244	90	** 201 A2	14,500	5.75		
26.5 R 25	EMR 1030 TL	22.00/3.0-25	1,747	672	1,841	746	783	5,488	41	** 209 A2/193 B	18,500	5.75	11,500	4.5
	EMR 1040 TL	22.00/3.0-25	1,798	673	1,891	747	816	5,641	60	** 209 A2/193 B	18,500	5.75	11,500	4.5
	EMR 1050 TL	22.00/3.0-25	1,790	666	1,891	747	784	5,480	97	** 209 A2	18,500	5.75		
750/65 R 25	EMR 1030 TL	24.00/3.0-25	1,607	744	1,646	781	752	5,051	44	** 209 A2/190 B	18,500	5.75	10,600	4.25
29.5 R 25	EMR 1030 TL	25.00/3.5-25	1,873	750	1,972	833	828	5,430	43	** 216 A2/200 B	22,400	5.75	14,000	4.5
	EMR 1040 TL	25.00/3.5-25	1,921	750	2,024	833	829	5,702	65	** 216 A2/200 B	22,400	5.75	14,000	4.5
	EMR 1042 TL	25.00/3.5-25	1,873	750	1,972	833	834	5,609	60	** 200 B/216 A2	22,400	5.75	14,000	4.5
	EMR 1050 TL	25.00/3.5-25	1,921	750	2,024	833	832	5,800	110	** 216 A2	22,400	5.75		
18.00 R 33	EMR 1045 TL	13.00/2.5-33	1,870	503	1,960	553	852	5,601	54	** 191 B			10,900	6.5

GRADER SERVICE

Tire size	Tread pattern type	Rim (permitted)	New		Max. in service		Loaded static radius (mm)	Rolling circumference (mm)	Tread depth (mm)	Service description LI/SS	Tire load capacity (kg) at 40 (km/h)	Tire pressure (bar)
			Overall diameter (mm)	Section width (mm)	Overall diameter (mm)	Overall width (mm)						
14.00 R 24	EMR 1020 TL	8.00TG-24 SDC (10.00VA-24 SDC)	1,368	375	1,414	405	617	4,100	24	* 153 A8	3,650	3.75

** - Index of tire strength

- ▼ NEW
- ▼ UNDER PREPARATION

