

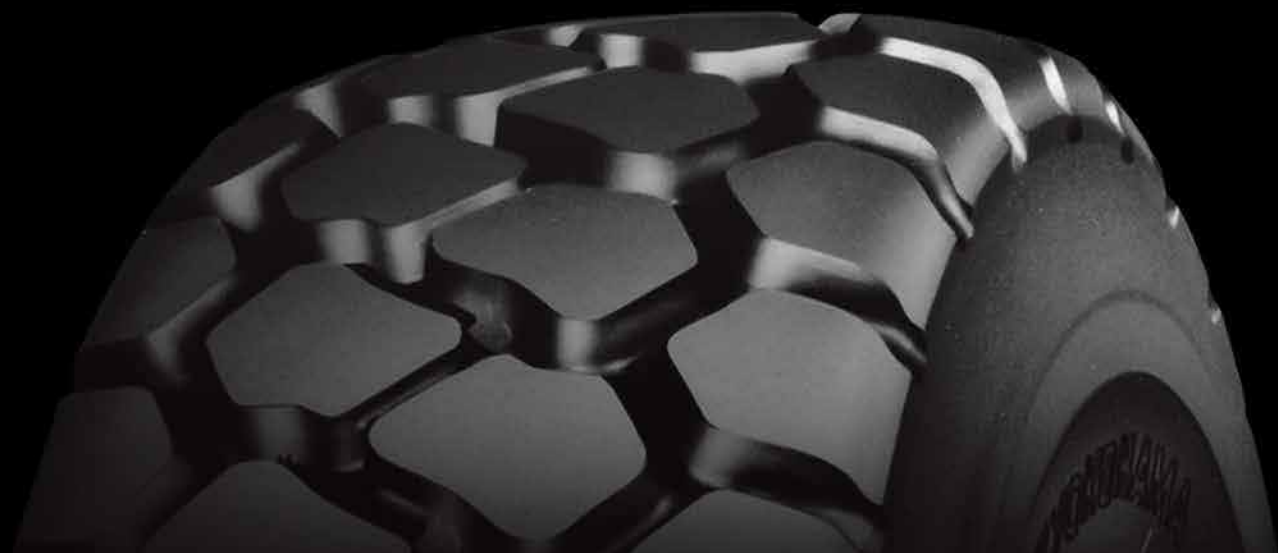


RB31™ RADIAL TIRE

ENGINEERED FOR MAXIMUM DURABILITY

- *E-3/L-3 Articulated Dump Trucks, Scrapers and Front-End Loaders*

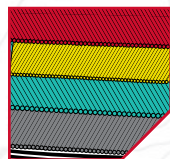
 **YOKOHAMA®**



RB31™ RADIAL TIRE

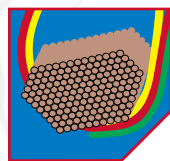
STRENGTH. DURABILITY. STABILITY.

The ultra-durable RB31™ is engineered to thrive on the most challenging surfaces and with an industry-leading belt package, this tire delivers maximum puncture-resistance. It's just one more example of how our technology is taking the lead in our industry so that you can do the same in yours.



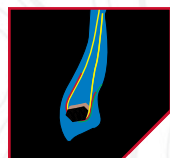
Special Belt Construction

A tough multi-layer, cross-ply steel belt package designed to minimize stress in the belt edge area. This improves durability, riding comfort and driving stability.



Flat Base Hexagonal Bead Construction

Locks the bead in place for greater strength and increased bead base durability. The wide contact area on the bead base increases performance and combats rim slippage.



High Turn-Up Carcass Construction

Protects against exterior damage while providing greater lateral stiffness and improved road stability.



Butress Side Protection

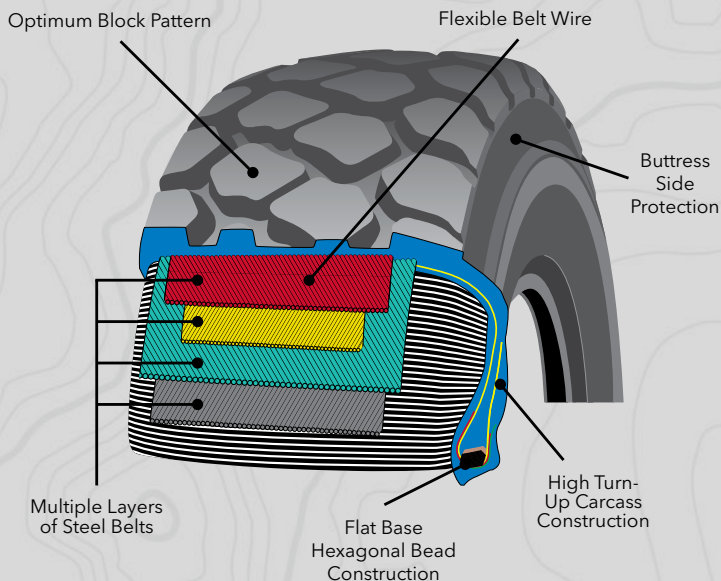
Protects against outside damage resulting in fewer sidewall cuts and snags.



Unique Tread Design

Increases the contact area with a wider tread width, providing better wear life and lateral stability in loading and unloading operations. Zigzag shaped grooves at the shoulder provide better traction on muddy and soft ground.

UNSURPASSED CONSTRUCTION



RB31 E-3/L-3

Size	Part#	TRA Code	Compound	Star Mark (*)	Groove Depth	Rim Size	Inflated Dimensions		Static Loaded Radius (in.)	Static Loaded Width (in.)	Ship Weight
							Overall Diameter (in.)	Overall Width (in.)			
20.5R25	13110	E-3	CP	**	43	17.00-2.0	58.1	20.9	26.6	23.1	541
		L-3	CP	*					25.9	24.0	
23.5R25	13111	E-3	CP	**	45	19.50-2.5	63.0	24.1	28.3	26.5	756
		L-3	CP	*					27.7	27.3	
26.5R25	13112	E-3	CP	**	49	22.00-3.0	68.2	26.6	30.9	29.3	1067
		L-3	CP	*					30.0	29.9	
29.5R25	13113	E-3	CP	**	60	25.00-3.5	72.8	29.9	32.7	33.1	1313
		L-3	CP	*					31.7	34.1	

RB31 L-3

Size	Part#	TRA Code	Compound	Star Mark (*)	Groove Depth	Rim Size	Inflated Dimensions		Static Loaded Radius (in.)	Static Loaded Width (in.)	Ship Weight
							Overall Diameter (in.)	Overall Width (in.)			
17.5R25	03150	L-3	CP	*	39	14.00-1.5	53.1	17.4	23.9	19.7	363

PLY RATING

LOADER		
Size	Star Mark (*)	Ply Rating
17.5R25	*	UP TO 16
20.5R25	*	UP TO 20
23.5R25	*	UP TO 24
26.5R25	*	UP TO 26
29.5R25	*	UP TO 28

EARTHMOVER		
Size	Star Mark (*)	Ply Rating
17.5R25	**	UP TO 22
20.5R25	**	UP TO 28
23.5R25	**	UP TO 32
26.5R25	**	UP TO 36
29.5R25	**	UP TO 40